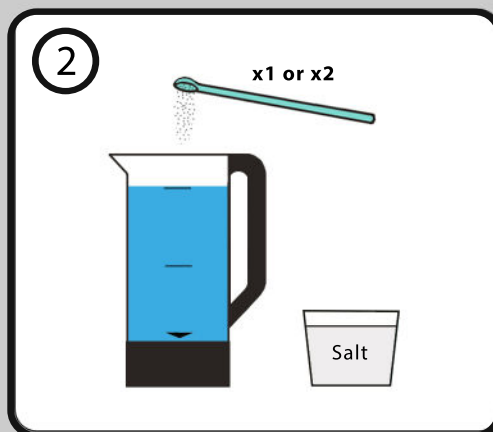
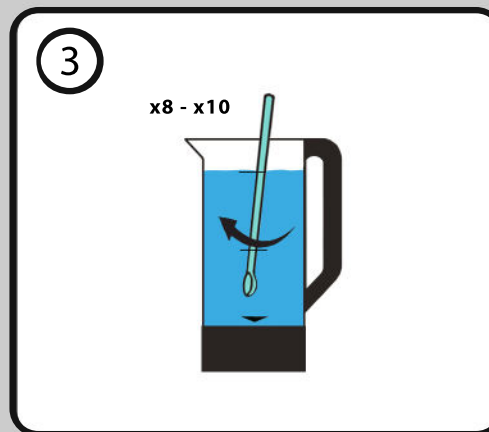


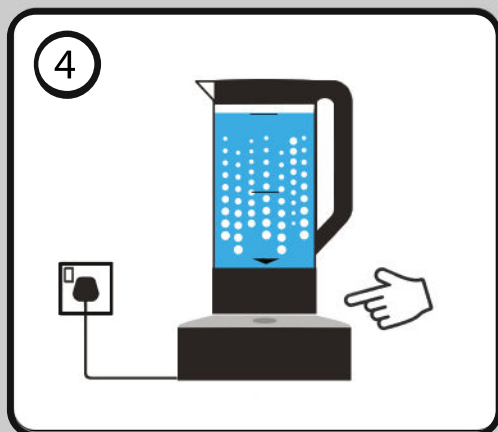
Fill the jug with tap water to either 1 or 2 litres (0.26 or 0.52 US gal, or 34 – 67 US fl oz) depending on the desired amount of activated solution to be generated. The water should be between 5 to 35C (41 to 95F).



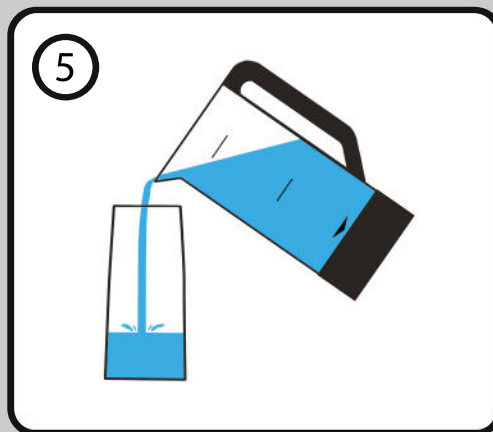
Add 1 level spoon full of salt to 1 litres (0.26 US gal, or 34 US fl oz) or 2 level spoon full to 2 litres (0.52 US gal or 67 US fl oz). Do not add more or less salt than recommended. Use table salt and not rock salt.



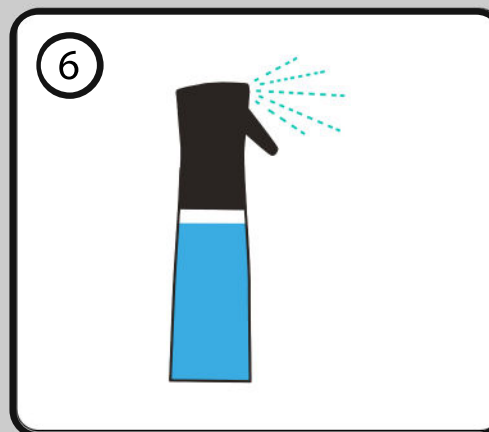
Stir the solution at least 8 – 10 times with the stirring spoon. Replace the lid after stirring with the emptying gap in the lid aligned to the jug spout.



Place the jug on the base and turn on at the power socket. It will beep and the green light will show. Press the power button on the base once for a 4 minute activation for 1l (0.26 US gal or 34 US fl oz) and 1 spoon of salt. A purple light will show at the bottom of the jug and on the base. Press the power button on the base twice for an 8 minute activation for 2l (0.52 US gal or 67 US fl oz). A blue light will show at the bottom of the jug and on the base. The solution will go cloudy with micro-bubbles being generated. To cancel the activation, press the power button on the base and hold down for 4 seconds.



After the activation has finished, the bubbles will stop. There will be three beeps and the green light will flash. Wait until the green light has finished flashing before using the device again. Fill spray bottle with activated solution.



Pour the activated solution into either a spray bottle or a container to apply to surfaces or fabrics to clean and disinfect. The solution can also be used as a deodoriser. Before using the device again if the green light is not showing, press the power button once to put the unit on standby and the green light will show again.

- ✓ After 5 to 7 days, either pour solution away and make new solution or repeat process
- ✓ After use, rinse inside of jug with cold water
- ✓ Always use power supply and plug included
- ✗ Do not remove jug from base until end of process
- ✗ Do not dilute or mix with chemicals
- ✗ Do not touch electrode guard or wipe with excessive force
- ✗ Do not store the solution in the jug
- ✗ Never use the jug or the base with another appliance



Scan this QR code to access the full manual for this device as well as information on other Centrego products and ECA solutions.

Centrego Renew - Safety Information

English - keep out of reach of children. Always read the instructions carefully before use. This system and its accessories is designed to generate 1l (0.26 US gal, or 34 US Fl oz) to 2 litres (0.52 US gal or 67 US fl oz) of activated solution per batch using the salt measuring spoon supplied. Always use the electrical plug and adapter provided with the system – do not use alternatives or copies. contact provider for replacement power supply if required. Do not drink the contents. Always use the correct amount of salt: 4g (0.14 ounces) or 1 level spoon to 1l (0.26 US gal, or 34 US Fl oz) of water - 8g (0.28 ounces) or 2 level spoons to 2l litres (0.52 US gal or 67 US Fl oz) of water. Do not use any other additive. Make sure the base unit is always dry and positioned on a flat surface before use. A designated area should be used to generate the activated solutions. When not in use the Centrego Renew should be disconnected from the power source and stowed away. The activated Centrego Renew solution should not be left in direct sunlight otherwise it will degrade. always keep the jug lid on.

Español - Mantener fuera del alcance de los niños. Siempre lea atentamente las instrucciones antes de usar. Este sistema y sus accesorios están diseñados para generar de 1 l (0,26 gal EE. UU. o 34 onzas líquidas estadounidenses) a 2 litros (0,52 gal EE. UU. o 67 onzas líquidas estadounidenses) de solución activada por lote utilizando la cuchara medidora de sal suministrada. Utilice siempre el enchufe eléctrico y el adaptador proporcionados con el sistema; no utilice alternativas ni copias. Póngase en contacto con el proveedor para obtener una fuente de alimentación de reemplazo si es necesario. No beba el contenido. Utilice siempre la cantidad correcta de sal: 4 g (0,14 onzas) o 1 cuchara al ras por 1 l (0,26 gal EE. UU. o 34 onzas líquidas estadounidenses) de agua - 8 g (0,28 onzas) o 2 cucharas al ras por 2 l (67 onzas líquidas estadounidenses) de agua. No use ningún otro aditivo. Asegúrese de que la unidad base esté siempre seca y colocada sobre una superficie plana antes de usarla. Se debe utilizar un área designada para generar las soluciones activadas. Cuando no esté en uso, Centrego Renew debe desconectarse de la fuente de alimentación y guardarse. La solución Centrego Renew activada no debe dejarse expuesta a la luz solar directa, de lo contrario se degradará. mantenga siempre la tapa de la jarra puesta.

Français - Tenir hors de portée des enfants. Lisez toujours attentivement les instructions avant utilisation. Ce système et ses accessoires sont conçus pour générer 1 litre (0,26 US gal ou 34 US Fl oz) à 2 litres (0,52 US gal ou 67 US fl oz) de solution activée par lot à l'aide de la cuillère doseuse de sel fournie. Utilisez toujours la fiche électrique et l'adaptateur fournis avec le système - n'utilisez pas d'alternatives ou de copies. contacter le fournisseur pour une alimentation électrique de remplacement si nécessaire. Ne buvez pas le contenu. Utilisez toujours la bonne quantité de sel : 4 g (0,14 once) ou 1 cuillère rase pour 1 litre (0,26 US gal ou 34 US Fl oz) d'eau - 8 g (0,28 once) ou 2 cuillères rases pour 2 litres (0,52 US gal ou 67 US Fl oz) d'eau. N'utilisez aucun autre additif. Assurez-vous que l'unité de base est toujours sèche et placée sur une surface plane avant utilisation. Une zone désignée doit être utilisée pour générer les solutions activées. Lorsqu'il n'est pas utilisé, le Centrego Renew doit être débranché de la source d'alimentation et rangé. La solution Centrego Renew activée ne doit pas être exposée à la lumière directe du soleil, sinon elle se dégradera. Gardez toujours le couvercle de la verseuse en place.

Italiano - Tenere fuori dalla portata dei bambini. Leggere sempre attentamente le istruzioni prima dell'uso. Questo sistema e i suoi accessori sono progettati per generare da 1 l (0,26 US gal, o 34 US Fl oz) a 2 litri (0,52 US gal o 67 US fl oz) di soluzione attivata per lotto utilizzando il misurino di sale in dotazione. Utilizzare sempre la spina elettrica e l'adattatore forniti con il sistema – non utilizzare alternative o copie. contattare il fornitore per la sostituzione dell'alimentatore, se necessario. Non bere il contenuto. Utilizzare sempre la quantità corretta di sale: 4 g (0,14 once) o 1 cucchiaino raso per 1 litro (0,26 US gal o 34 US Fl oz) di acqua - 8 g (0,28 once) o 2 cucchiaini rasi per 2 l (0,52 US gal o 67 US Fl oz) di acqua. Non utilizzare nessun altro additivo. Assicurarsi che l'unità base sia sempre asciutta e posizionata su una superficie piana prima dell'uso. Un'area designata dovrebbe essere utilizzata per generare le soluzioni attivate. Quando non è in uso, Centrego Renew deve essere scollegato dalla fonte di alimentazione e riposto. La soluzione di Centrego Renew attivata non va lasciata alla luce diretta del sole, altrimenti si degrada. tieni sempre il coperchio della brocca.

Scan QR code for more information. Escanea el código QR para más información.
Scannez le code QR pour plus d'informations. Scansiona il codice QR per ulteriori informazioni

